



THE FARM AT CAPE KIDNAPPERS

HAWKE'S BAY, NEW ZEALAND

We are pleased to announce that Kauri Cliffs' sister lodge will be opening in November 2007. Located on the North Island in Hawke's Bay, one of New Zealand's most important wine districts, Cape Kidnappers has a rich history beginning with its discovery by Captain James Cook in 1769.

The new lodge, or "The Farm" as it is called, promises to be a five star experience. Cape Kidnappers is set on a 6,000 acre sheep and cattle farm which encompasses land reminiscent of Montana but plunges 800 feet straight into the sea.

On the exterior, the lodge will resemble a cluster of farm buildings. Local materials are incorporated into graciously scaled rooms full of natural light and unexpected treasures. Comfort and ease are at a premium with each room taking on a character of its own while harkening back to the rural feeling of the New Zealand sheep station and wine country. Spacious cottages, each with breathtaking views, open to large porches overlooking a stunning Pacific panorama. The cottages feature calm colors and materials that suggest a traditional rural farm yet contain all of the modern amenities one could wish for.

Critics and golf devotees alike have already fallen in love with Cape Kidnappers' links-style golf course - it has been voted the 27th best golf course in the world. Now golfers and non-golfers alike will have a luxurious place to stay while exploring the wonders of Hawkes' Bay.

FACILITIES - The lodge offers two dining rooms and a covered loggia featuring a gourmet a la carte menu. Private dining and room service are available on request. Other rooms within the lodge include a lounge/living room, library which can be used as a private meeting room, intimate sitting room, wine cellar tasting room, and a computer room.

ONSITE ACTIVITIES

- Golf
- Hiking
- Gannet Safari
- Farm tour
- Full Service Luxury Spa
- State of the Art Fitness Centre
- Outdoor 50' Heated Pool, Jacuzzi/Spa and Pool Cabana

AREA ACTIVITIES

- Wine tours
- Fly fishing
- Hot air ballooning
- Art Deco tour
- Horseback riding
- River kayaking

GOLF - The par 72 championship golf course measures 7,119 yards or 6,510 meters that will challenge every skill level. Designed by Tom Doak, currently the hottest architect in golf, the course is ranked Number 27 in the world by Golf Magazine, the world's leading authority on the subject.

ACCOMMODATION

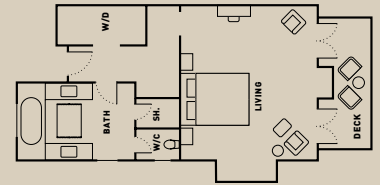
AMENITIES - Each cottage suite has room controlled air conditioning, high speed wireless internet, remote control flatscreen LCD TV, DVD, CD player with iPod connection, safe, fully stocked complimentary mini bar*, walk in closet, spacious bathroom with heated towel rack, separate WC and shower stalls, oversized bath tub, and twin vanities. 180 degree panoramic views of the farm, golf course and Pacific Ocean are enjoyed from each suite's private balcony. Interior design is by Linda Bedell of Aspen, Colorado.

*Excludes alcoholic beverages

LODGE SUITE *4 large suites - 708 sq ft / 65 sq meters*

- Our largest suites, located inside the Lodge Building offering the convenience of proximity to lodge facilities, full (wet) mini bars.

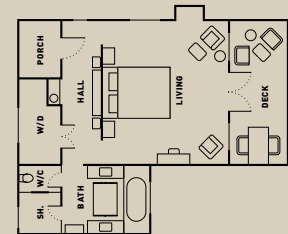
	Double	Single
<i>Low season</i>	\$650	\$950
<i>Shoulder season</i>	\$850	\$1395
<i>High season</i>	\$990	\$1590



RIDGE SUITE *8 suites - 683 sq ft / 63 sq meters*

- Situated atop the skyline ridge to the southwest of and a short walk from the Lodge.
- Spacious, comfortable and private with fireplaces and full (wet) mini bars.

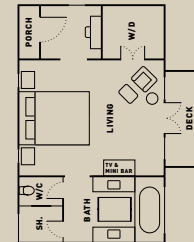
	Double	Single
<i>Low season</i>	\$650	\$950
<i>Shoulder season</i>	\$850	\$1395
<i>High season</i>	\$990	\$1590



HILLTOP SUITE *10 suites - 500 sq ft / 46.5 sq meters*

- Situated on top of the hill above the Lodge offering comfort and spectacular vistas.
- Two Hilltop Suites have the option to add an interconnecting second smaller bedroom.

	Double	Single
<i>Low season</i>	\$500	\$800
<i>Shoulder season</i>	\$675	\$1050
<i>High season</i>	\$790	\$1275



OWNERS COTTAGE

- 4 deluxe bedrooms with fireplaces, large bathrooms, walk-in closets and private balconies.
- Large living room with stone fireplace, open kitchen and dining area.
- 2 small sitting rooms with fireplaces, TVs and comfortable seating.
- Entrance foyer, powder room, stone terrace and outdoor jacuzzi.
- Can be rented as a 2 bedroom or 4 bedroom house (floorplan available on request).

	2 Bdrm Suite MAX 4	2 Bdrm House MAX 4	4 Bdrm House MAX 8
<i>Low season</i>	\$3,500	\$5,000	\$8,000
<i>Shoulder season</i>	\$3,900	\$5,000	\$8,000
<i>High season</i>	\$4,900	\$6500	\$10,000

Low season May 1 2008 - Sep 30 '08 Shoulder season Oct 1 '07 - Dec 14 '07 and Apr 1 - Apr 30 '08 High season Dec 15 '07 - Mar 31 '08

Rates are per person per night, excludes Owners Cottage. All rates quoted in New Zealand dollars and exclude 12.5% Government Goods & Service Tax. Two night minimum stay applies over the high season (15 December - 31 March).

Contact Cape Kidnappers

Jay Robertson - General Manager
448 Clifton Road, Te Awanga, Hawke's Bay,
PO Box 8850, Havelock North, New Zealand
Tel: +64 6 875 1900 Fax: +64 6 875 1901
reservations@capekidnappers.com

USA PR and Marketing Representative

Lynne J. Davis, Lynne Davis & Co. LLC.,
350 E. 82nd St., # 5H, New York, NY 10028-4912
Tel: 212-717-5789 Fax: 212-717-2244 Cell: 917-650-7487
email: DavisAndCo1@aol.com

GETTING TO CAPE KIDNAPPERS

FROM AUCKLAND

- BY PLANE - COMMERCIAL FLIGHTS DAILY (55 MINUTES)
- BY CAR - 6 HRS
- BY HELICOPTER - 1 HR 45 MIN

FROM WELLINGTON

- BY PLANE - COMMERCIAL FLIGHTS DAILY (50 MINUTES)
- BY CAR - 4 HRS
- BY HELICOPTER - 1 HR 20 MIN

FROM KAURI CLIFFS

- BY PLANE - COMMERCIAL FLIGHTS DAILY VIA AUCKLAND
- BY CHARTERED PRIVATE FLIGHT - 1 HR 45 MIN
- BY HELICOPTER - 2 HR 30 MIN

